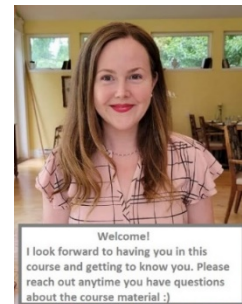




Earth Science 11

Instructor: Melissa Juhasz

Email: Melissa.juhasz@sd68.bc.ca



Welcome to Earth Science with Island ConnectEd!

Introduction:

This course is organized into ten units. Within each unit you will find individual focus sections. Within each section there will be learning materials and assignments. Please work through the course as it is presented, without jumping ahead.

Earth Science is the study of the Earth, its materials, structures, processes and its place in the Universe. You will notice through assignments and readings in the course that you have an opportunity to explore science in a way that highlights themes of studying local geologic history and environmental sustainability. Assignments are designed to engage and give opportunities to discover your interests and passions. All of the projects, labs and assignments build your science skills to meet the learning outcomes for the course - in a fun and creative way!

Topics:

<u>Units</u>
Unit 1: Stars and Galaxies
Unit 2: The Solar System
Unit 3: Earth, Moon and Sun
Unit 4: Plate Tectonics
Unit 5: Rocks and Minerals
Unit 6: Geologic Time
Unit 7: Surface Processes
Unit 8: Oceanography
Unit 9: Atmospheric Sciences
Unit 10: Careers in Earth Science

Grading:

Worksheets	5%
Projects	50%
Tests	45%
TOTAL	100%

Some assignments will be relatively simple and short and you should be able to complete within one block (one sitting). Other assignments require research and therefore may be lengthier. Please read through the assignment details carefully to ensure that you have met all of the required criteria.

Resources

Canvas Website: nlps.instructure.com

Jupiter Grades: Grades and feedback at <https://jupitergrades.com>

School Website: School information <https://island-connected.sd68.bc.ca>

Attendance

Please be aware that Island Connect K -12 does not have a general attendance requirement. However, it is in your best interest to make a habit of checking in with your teacher at least once a week – face to face, by email, or phone.

Assignments should be submitted **weekly** with continuous progress being made. Past learners have stated that such contact promotes engagement with the course materials and serves to motivate them to complete the work in a timely fashion.

Completion Timeline Expectations

Successful learners typically finish within four months of initial enrollment in this course. COMMIT to achieving your goals! Get a calendar out and plan how you and when you will complete each lesson in the first two units immediately. If you mess up, do your best to catch up, but change the timeline right away to reflect this change and, then, do your best to never let yourself fall behind again.