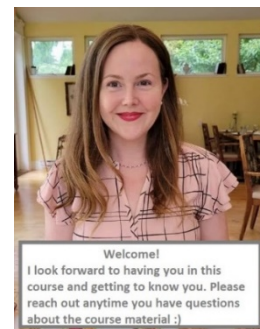




Explorations in Social Studies 11: Human Footprints

Instructor: Melissa Juhasz

Email: Melissa.juhasz@sd68.bc.ca



Welcome to SS11 – Explorations with Island ConnectEd!

Introduction:

This course is unlike any other that you have taken. It is an open, flexible course that has been designed to allow you to explore several areas within the realm of Social Studies at the grade 11 level. Each of the four modules which make up this course has been created to prepare you for one of four Social Studies courses at the grade 12 level. It is like those restaurants that have a sampler menu so that when you go back the next time, you know exactly what to order.

The focus of this course is to explore various facets of human ways of being; both historically and at present. Ways of life, ways of being, ways that we have impacted and created change, ways that we have shaped the landscape. This course aims to build and strengthen awareness of *your* global presence, and in general, the impact of human footprints on our Earth.

With this in mind, you will notice various methods for you to demonstrate your learning to me. Some of the cool ways are: through inquiry-based case studies in each section, constructing posters and collages, place-based learning opportunities, creating illustrations, expert projects and project options in one of the sections. All of the projects and assignments build your social studies skills to meet the learning outcomes for the course - in a fun and creative way!

Module	Sections
Module One: Law Studies	Section 1: Introduction to Law Section 2: Canadian Law Section 3: Environmental Law Section 4: Case Study
Module Two: B.C. First Peoples	Section 1: Coast Salish Section 2: The Haida Section 3: Ktunaxa People of the Southern Plateau Section 4: Dakelh of the Northern Interior Section 5: Passion Project
Module Three: Physical Geography	Section 1: Biomes Section 2: Climate Change Section 3: Air & Water Quality Section 4: Passion Project
Module Four: Urban Studies	Section 1: History of Urbanization Section 2: Urban Growth Section 3: Shaping the Landscape

Assignments: Assignments are worth 100% of your final grade

Some assignments will be relatively simple and short and you should be able to complete within one block (one sitting). Other assignments require research and therefore may be lengthier. Please read through the assignment details carefully to ensure that you have met all of the required criteria.

Resources

Canvas Website: nlps.instructure.com

Jupiter Grades: Grades and feedback at <https://jupitergrades.com>

School Website: School information <https://island-connected.sd68.bc.ca>

Attendance

Please be aware that Island Connect K -12 does not have a general attendance requirement. However, it is in your best interest to make a habit of checking in with your teacher at least once a week – face to face, by email, or phone.

Assignments should be submitted **weekly** with continuous progress being made. Past learners have stated that such contact promotes engagement with the course materials and serves to motivate them to complete the work in a timely fashion.

Completion Timeline Expectations

Successful learners typically finish within four months of initial enrollment in this course. COMMIT to achieving your goals! Get a calendar out and plan how you and when you will complete each lesson in the first two units immediately. If you mess up, do your best to catch up, but change the timeline right away to reflect this change and, then, do your best to never let yourself fall behind again.