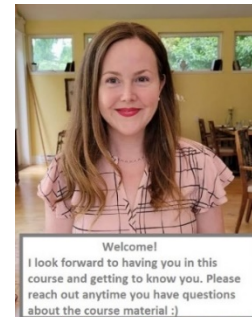




Physical Geography 12

Instructor: Melissa Juhasz

Email: Melissa.juhasz@sd68.bc.ca



Welcome to SS12 – Physical Geography with Island ConnectEd!

Introduction:

This course is organized into four modules. Within each module you will find individual focus sections. Within each section there will be learning materials and assignments. Please work through the course as it is presented, without jumping ahead.

The focus of this course is to build a curiosity of the natural wonders around you, to strengthen awareness of your environmental presence in the world and in general, the impact of human activities on our Earth. This course was developed with the idea of breaking the myth that Geography is BORING! With this in mind, you will notice various methods for you to demonstrate your learning to me. Some of the cool ways are: creating a song, building a story, designing mind maps, constructing poster collages, performing multi-media presentations through Audio/Visual, Expert projects and project options in two of the sections. All of the projects and assignments build your geographical skills to meet the learning outcomes for the course - in a fun and creative way!

Module	Sections
Module One: The Spheres and Plate Tectonics	Section 1: Geography Themes & Skills Section 2: Earth's Structure & Plate Tectonics Section 3: Earthquakes & Volcanoes Section 4: Rocks & Geology
Module Two: Weather and Climate	Section 1: Atmosphere Section 2: Weather & Climate Section 3: Extreme Weather Section 4: Climate Change
Module Three: Our Dynamic Earth	Section 1: Weathering & Erosion Section 2: Gradational Features Section 3: Effects of Natural Disasters
Module Four: Biomes of the World	Section 1: Biomes of the World Section 2: Environmental Issues Section 3: Human Responses & Sustainability

Assignments: **Assignments are worth 100% of your final grade**

Some assignments will be relatively simple and short and you should be able to complete within one block (one sitting). Other assignments require research and therefore may be lengthier. Please read through the assignment details carefully to ensure that you have met all of the required criteria.

Resources

Canvas Website: nlps.instructure.com

Jupiter Grades: Grades and feedback at <https://jupitergrades.com>

School Website: School information <https://island-connected.sd68.bc.ca>

Attendance

Please be aware that Island Connect K -12 does not have a general attendance requirement. However, it is in your best interest to make a habit of checking in with your teacher at least once a week – face to face, by email, or phone.

Assignments should be submitted **weekly** with continuous progress being made. Past learners have stated that such contact promotes engagement with the course materials and serves to motivate them to complete the work in a timely fashion.

Completion Timeline Expectations

Successful learners typically finish within four months of initial enrollment in this course. COMMIT to achieving your goals! Get a calendar out and plan how you and when you will complete each lesson in the first two units immediately. If you mess up, do your best to catch up, but change the timeline right away to reflect this change and, then, do your best to never let yourself fall behind again.